

SECTIONS OF 2D-INVERSIONS OF
BASIN LAKE IP SURVEY 2000, EL 19/98, ZEEHAN (W. Tas.).
WITH GEOLOGICAL SECTIONS SUPERIMPOSED

Michael W Asten

Flagstaff GeoConsultants Pty Ltd

18-Oct-2000

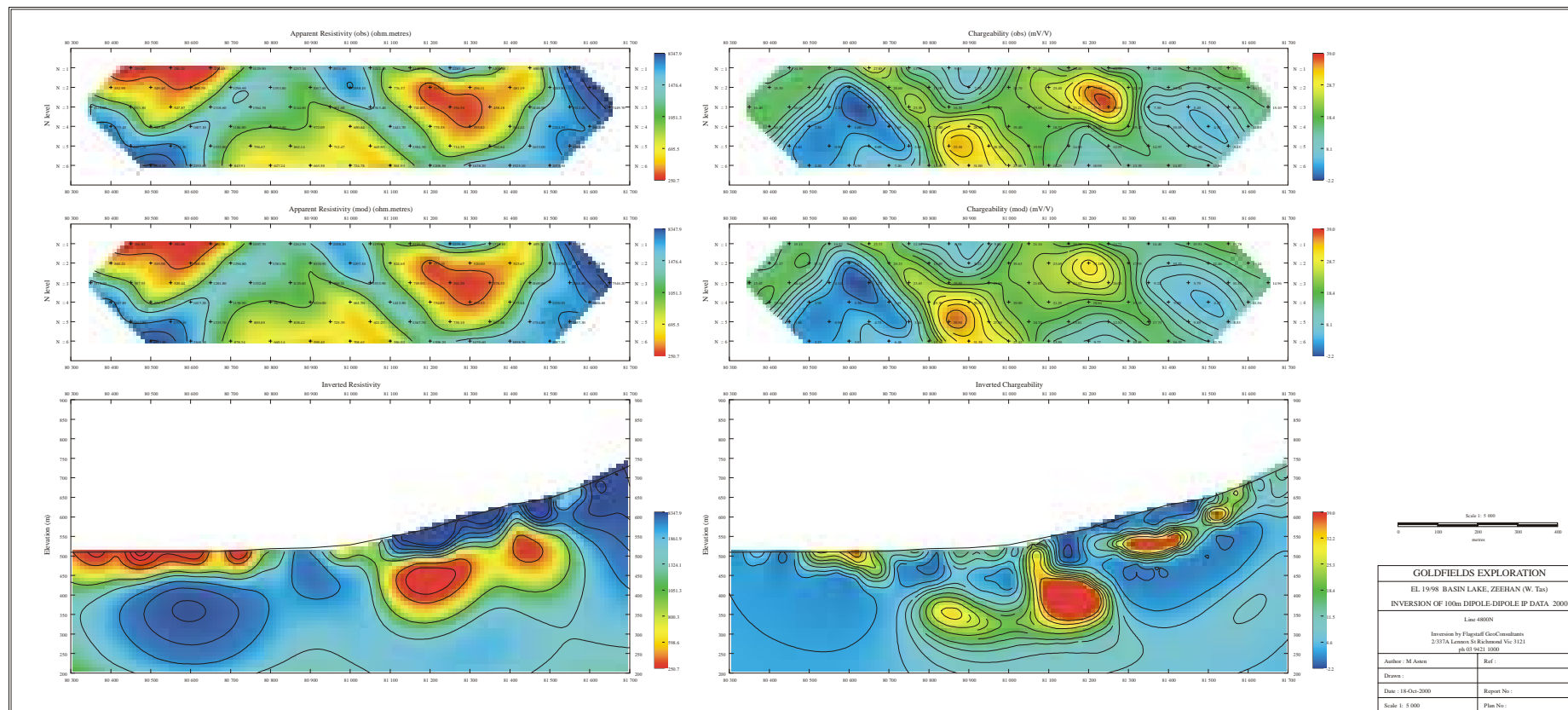
DISCLAIMERS

Confidentiality

This document and its contents are confidential and may not be disclosed or published in any manner (except in its entirety to a government department as part of the statutory reporting requirements and as may otherwise be required by law) unless Flagstaff GeoConsultants Pty Ltd ["Flagstaff"] has given its prior consent to the form and context of the disclosure or publication.

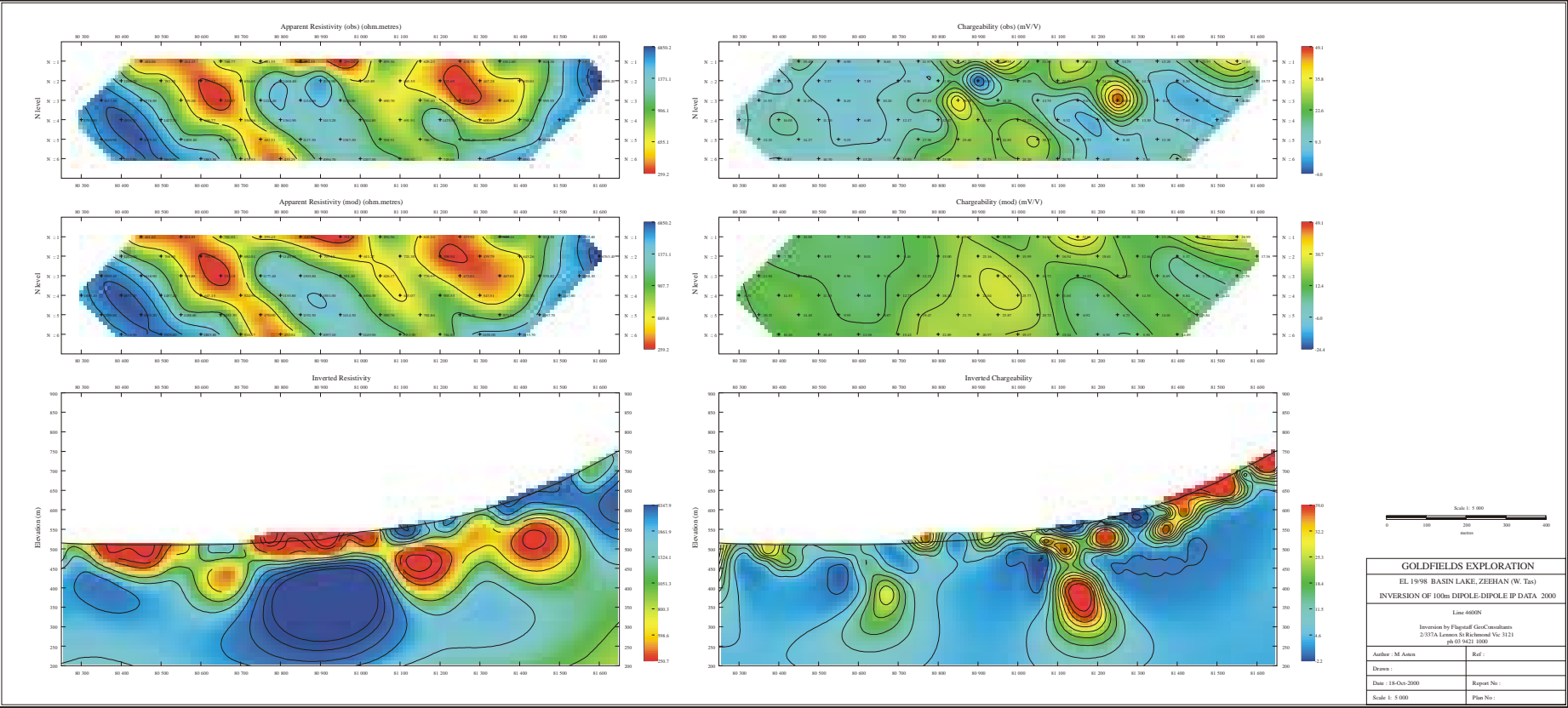
Disclaimer

Flagstaff has prepared this report based upon information believed to be accurate at the time of completion, but which is not guaranteed. Flagstaff makes no representation or warranty as to the accuracy, reliability or completeness of the information contained in this report and will not accept liability to any person for any errors or omissions or for losses or damages claimed as a result, directly or indirectly, of items discussed, opinions rendered or recommendations made in this report, except for statutory liability which may not be excluded.



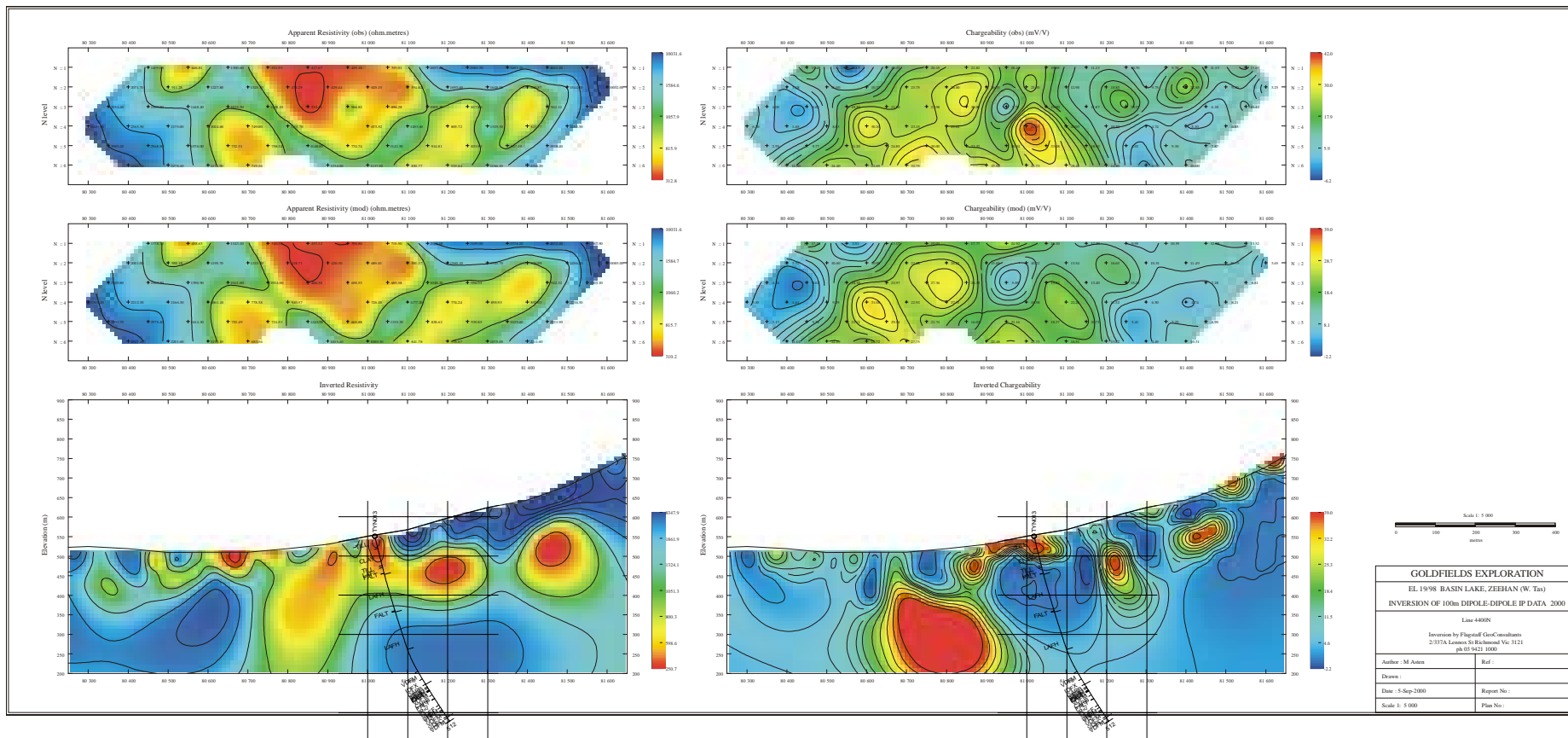
INVERSION - BASIN LAKE IP JULY 2000

LINE 4800N



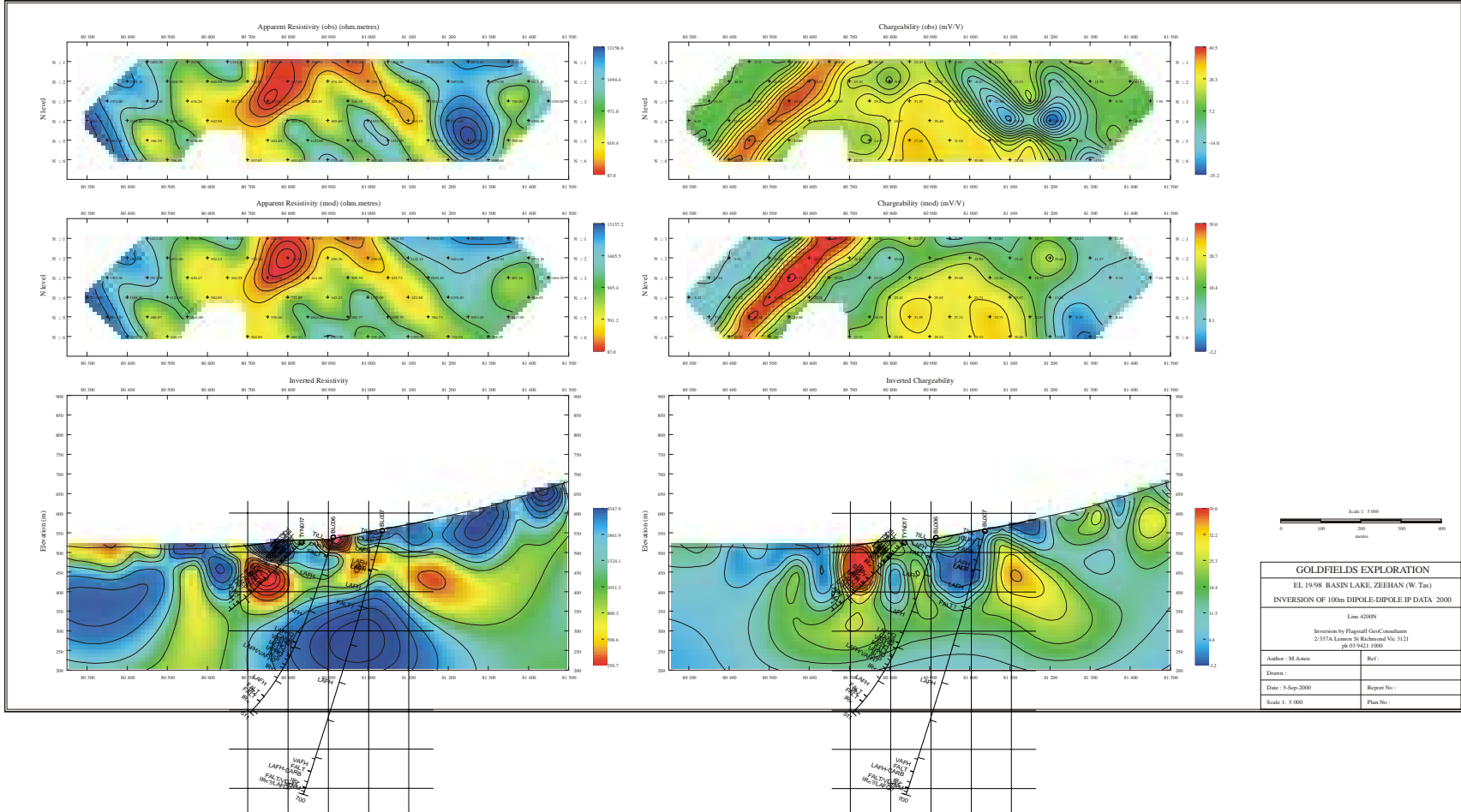
INVERSION - BASIN LAKE IP JULY 2000

LINE 4600N



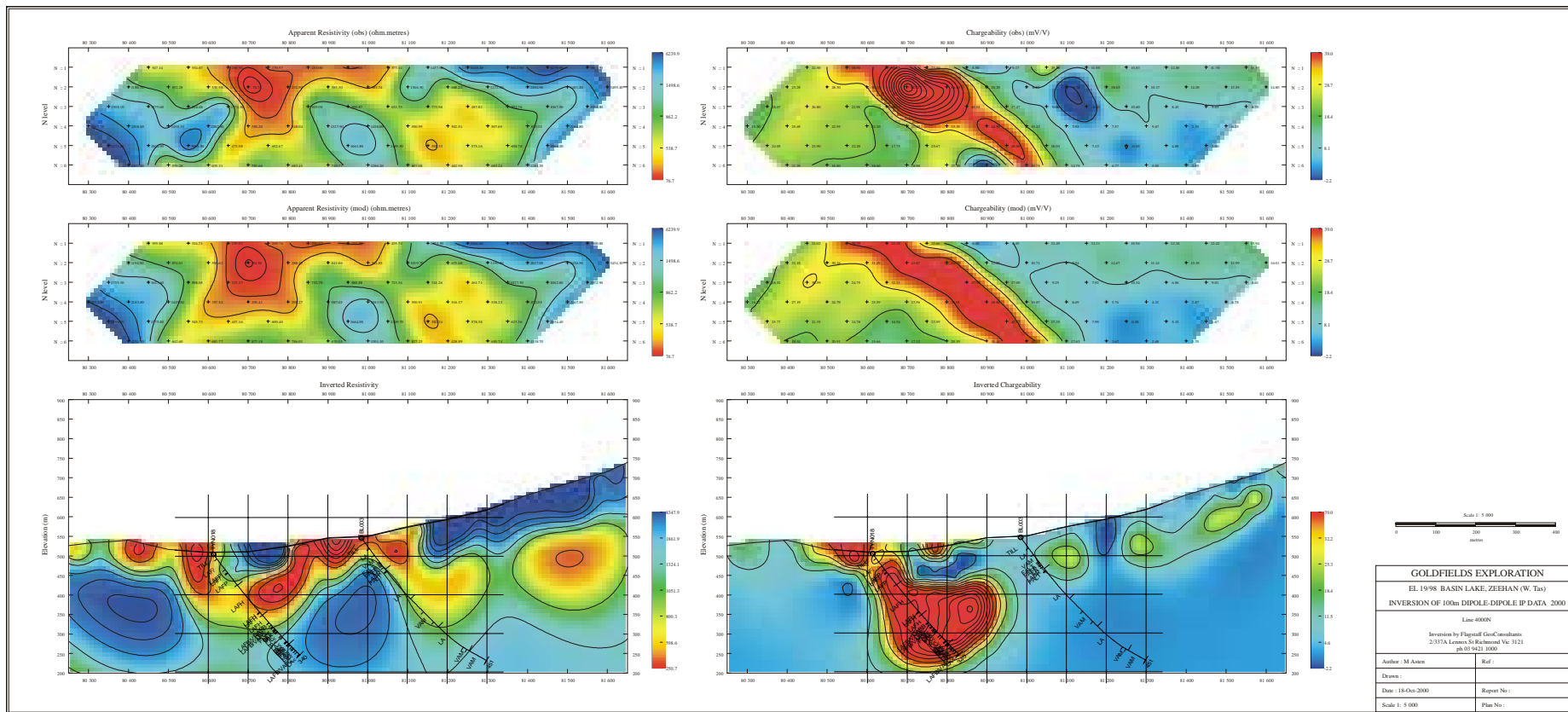
INVERSION - BASIN LAKE IP JULY 2000

LINE 4400N



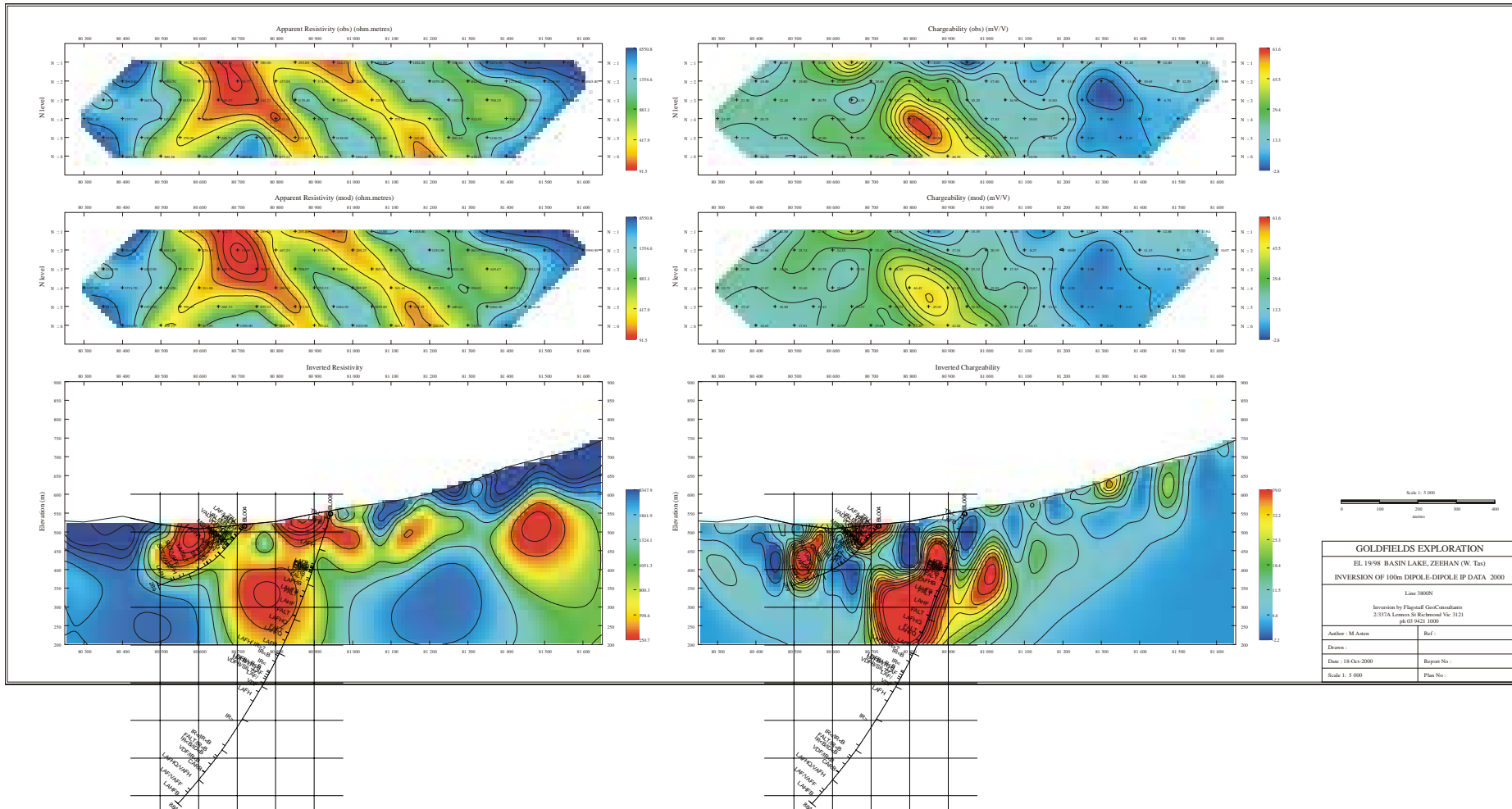
INVERSION - BASIN LAKE IP JULY 2000

LINE 4200N



INVERSION - BASIN LAKE IP JULY 2000

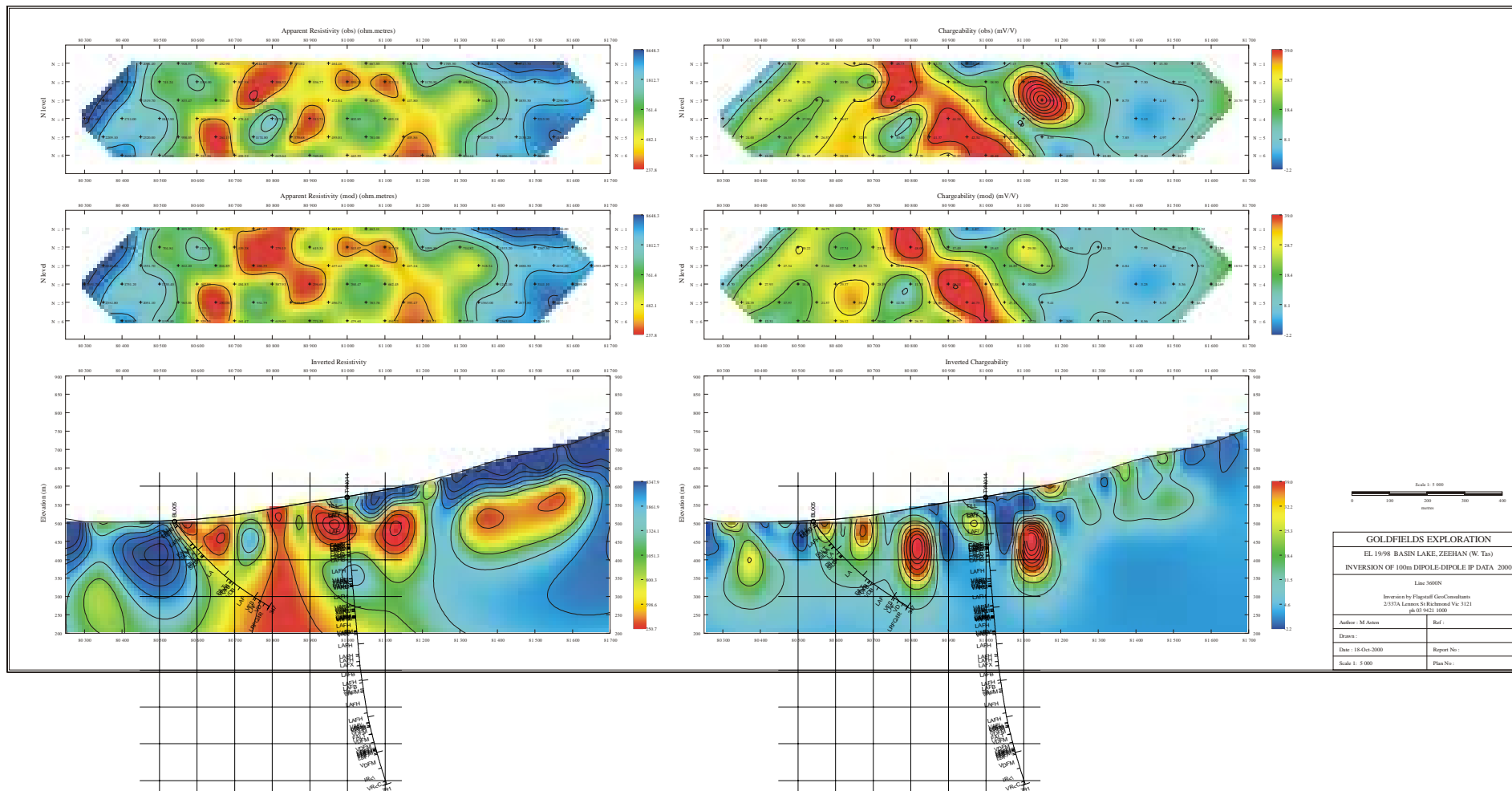
LINE 4000N



INVERSION - BASIN LAKE IP JULY 2000

LINE 3800N

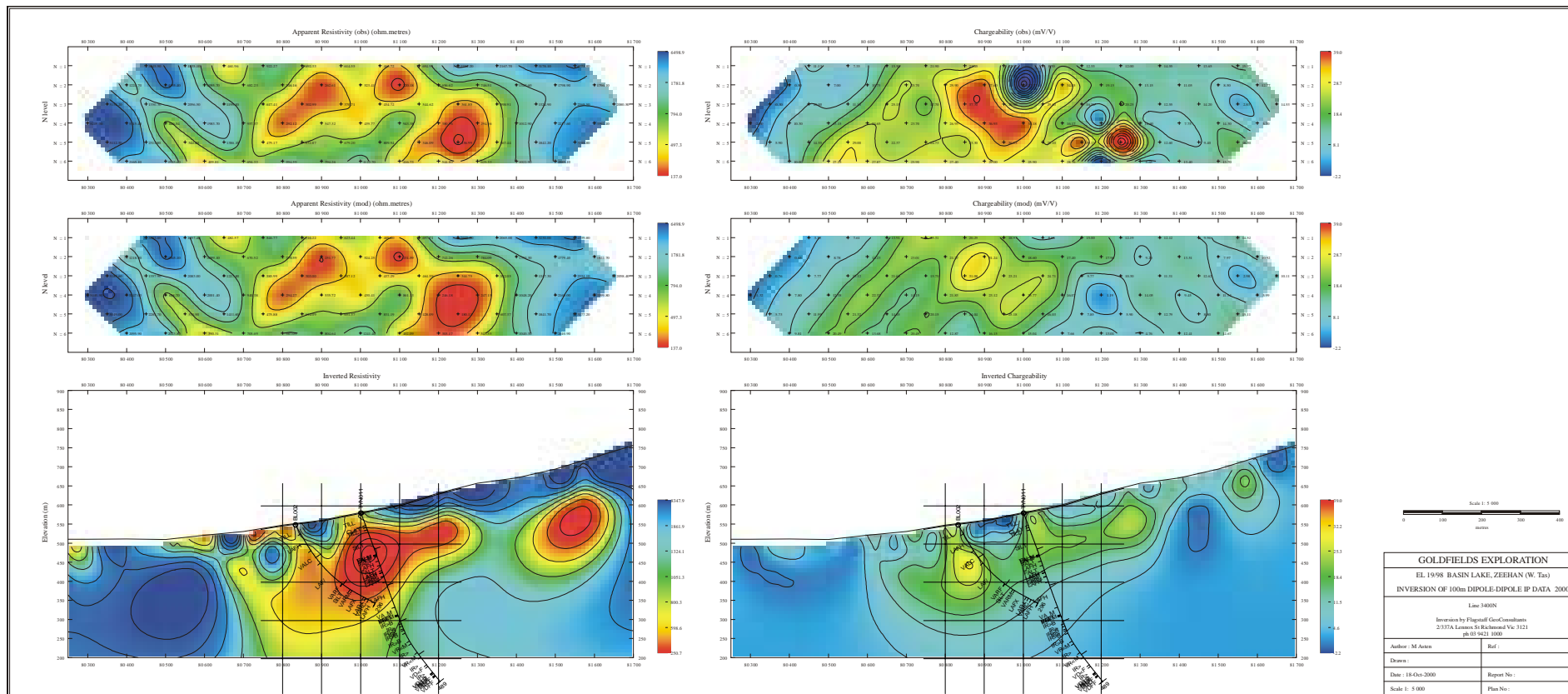
GOLDFIELDS EXPLORATION	
EL 15°98' BASIN LAKE, ZEEHAN (W. TAS)	
INVERSION OF 100m DIPOLE-DIPOLE IP DATA 2000	
Line 3800N	
Inversion by Flagstaff GeoConsultants 2/37A Lonsdale St Richmond Vic 3121 ph 03 9423 1800	
Author: M. Asten	Ref:
Drawn:	
Date: 18-Oct-2000	Report No.:
Scale 1: 5 000	Plan No.:



INVERSION - BASIN LAKE IP JULY 2000

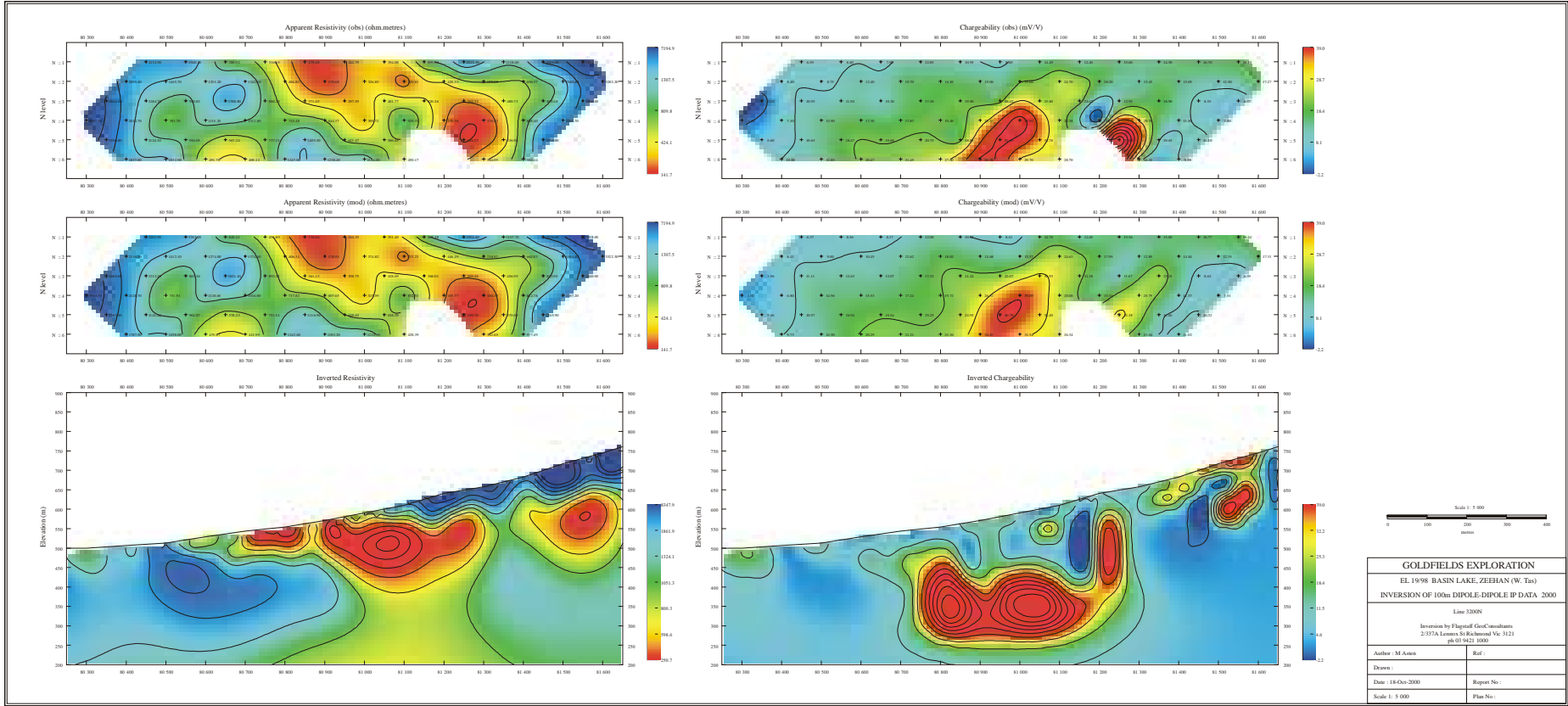
LINE 3600N

GOLDFIELDS EXPLORATION	
EL 19/98 BASIN LAKE, ZEEHAN (W. TAS)	
INVERSION OF 100m DIPOLE-DIPOLE IP DATA 2000	
Line 3600N	
Inversion by Flagstaff GeoConsultants 2/37A Leamons St Richmond Vic 3121 ph (03) 9423 1880	
Author: M. Adams	Ref:
Drawn:	
Date: 18 Oct 2000	Report No:
Scale 1: 5 000	Plan No:



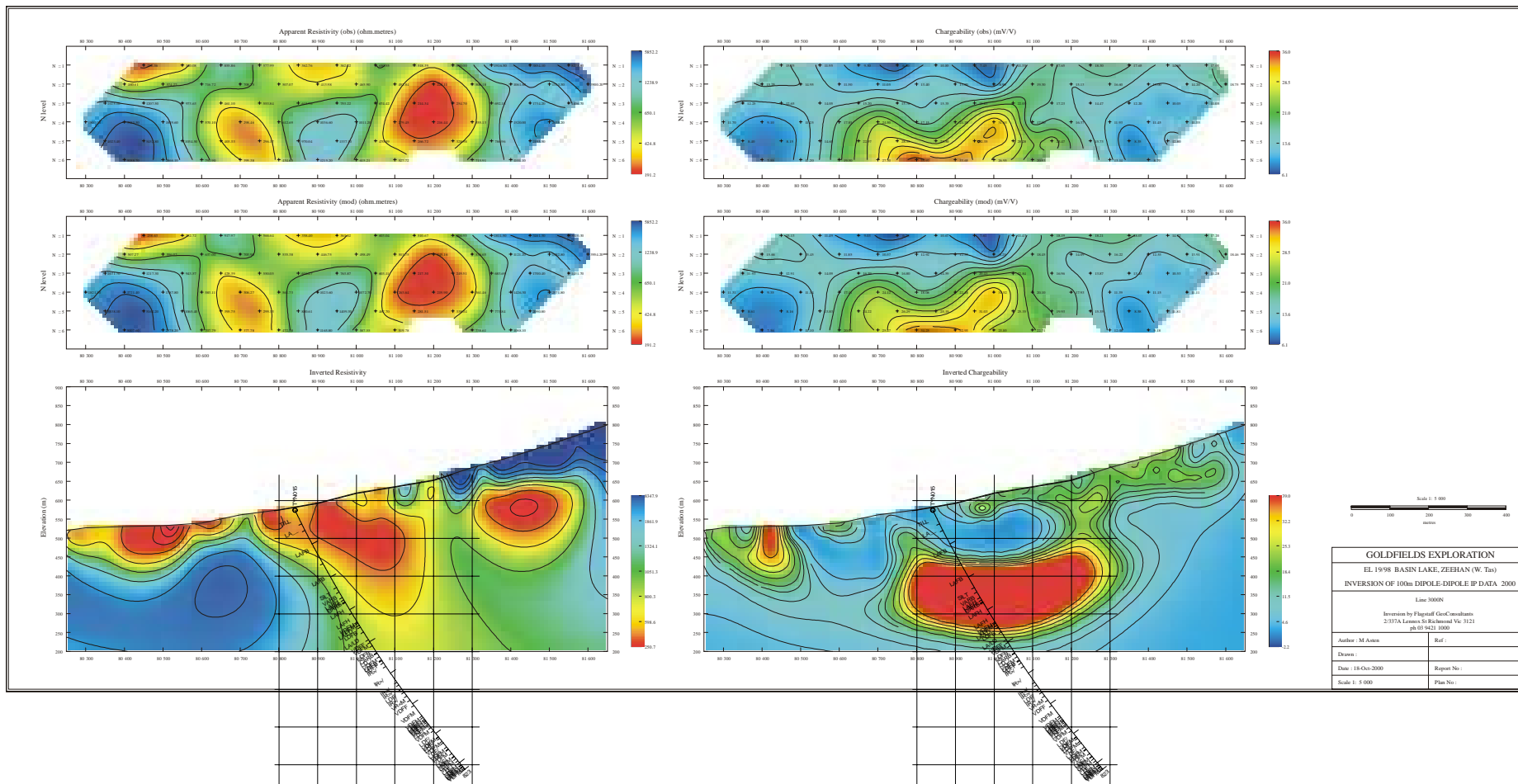
INVERSION - BASIN LAKE IP JULY 2000

LINE 3400N



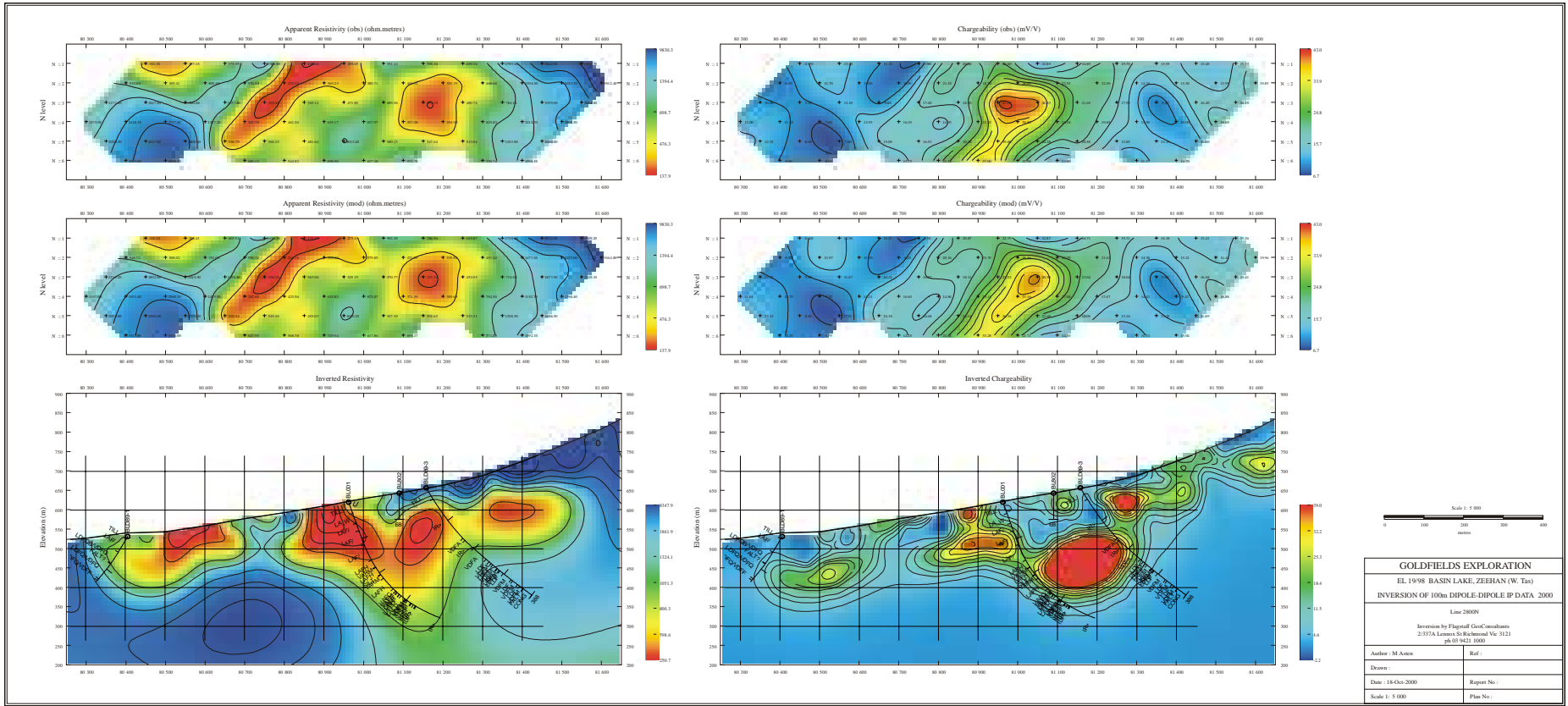
INVERSION - BASIN LAKE IP JULY 2000

LINE 3200N



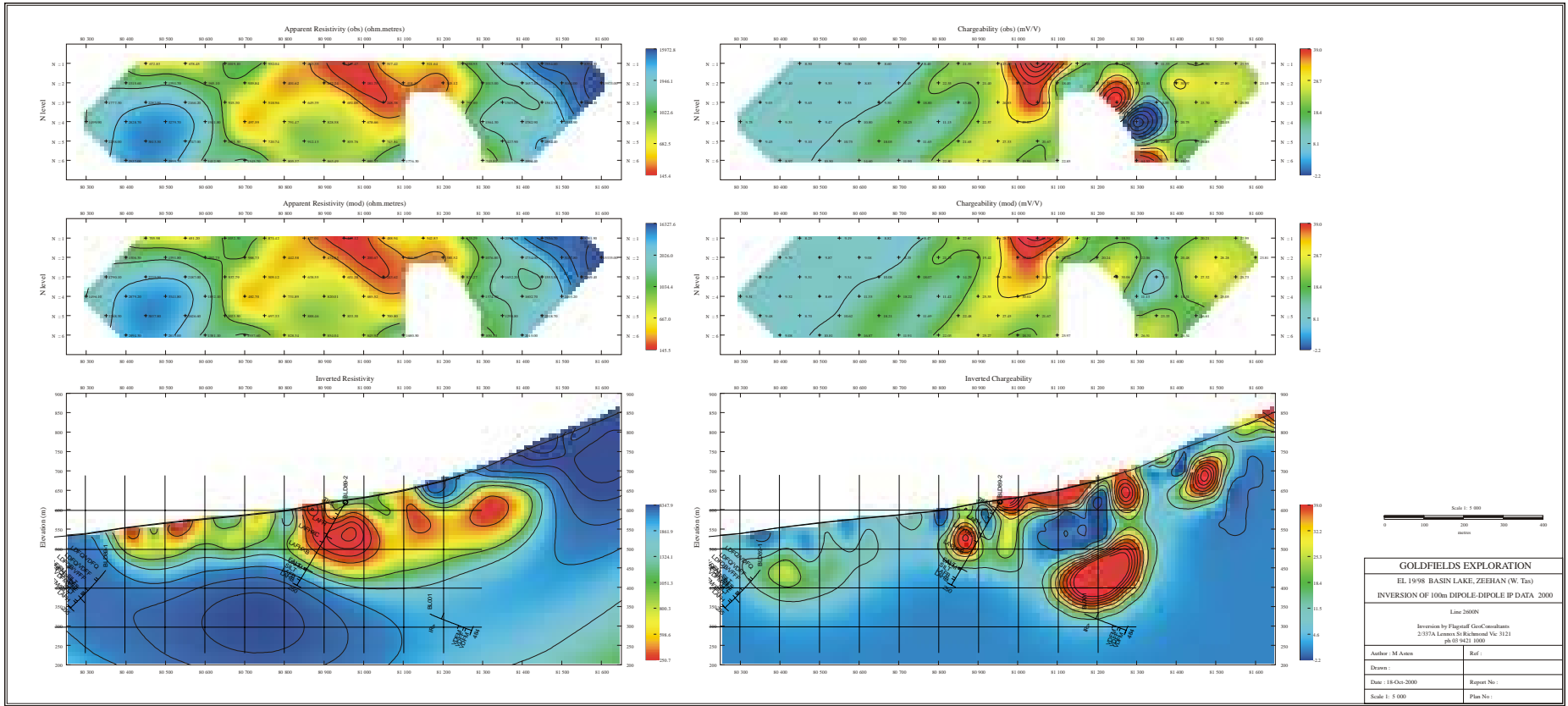
INVERSION - BASIN LAKE IP JULY 2000

LINE 3000N



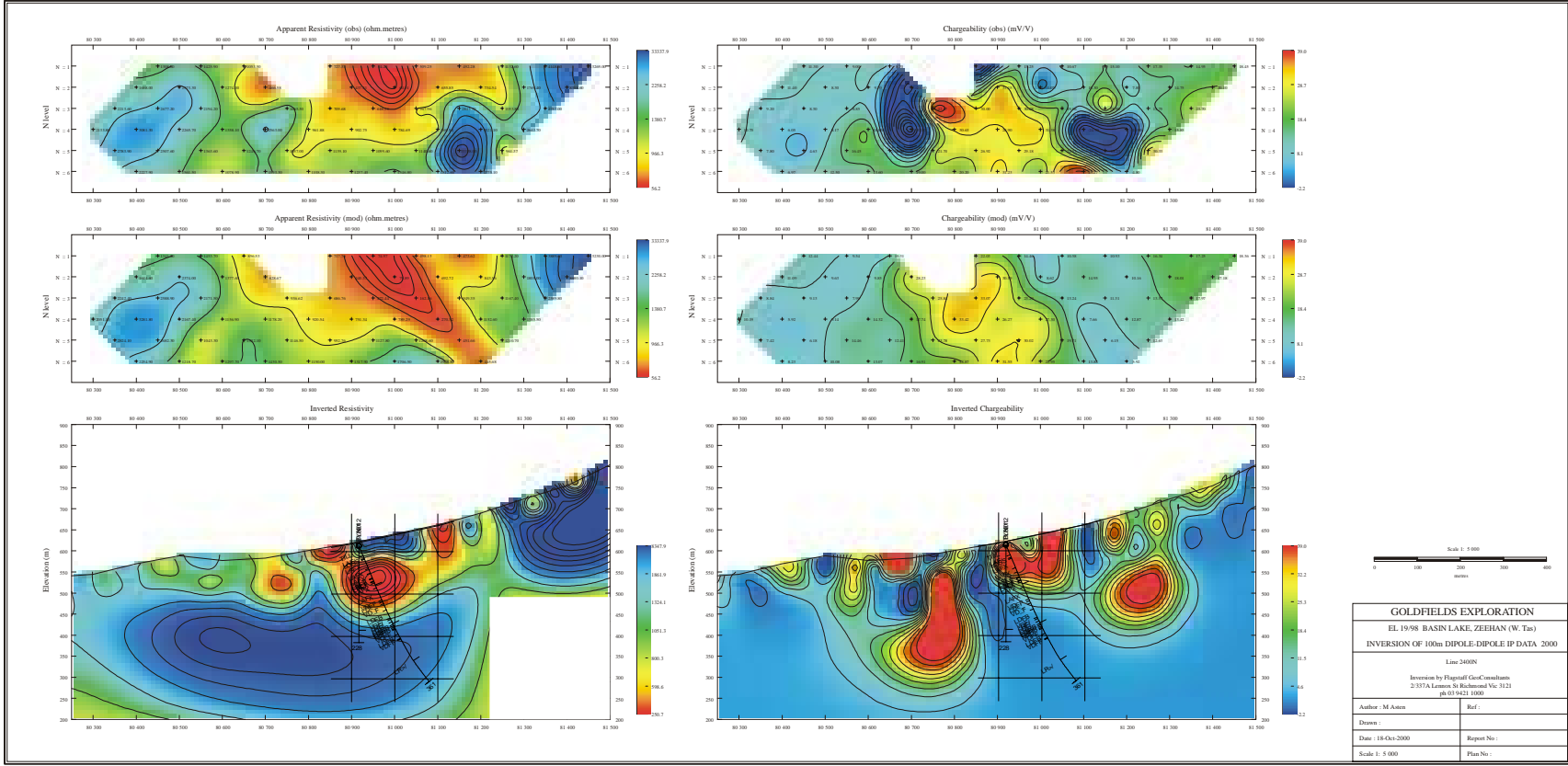
INVERSION - BASIN LAKE IP JULY 2000

LINE 2800N



INVERSION - BASIN LAKE IP JULY 2000

LINE 2600N



INVERSION - BASIN LAKE IP JULY 2000

LINE 2400N